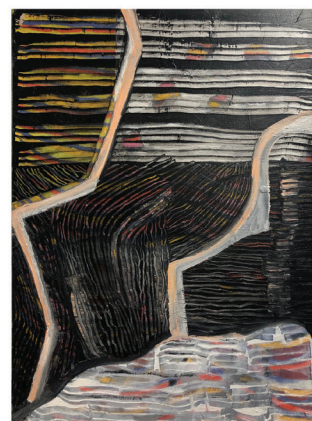
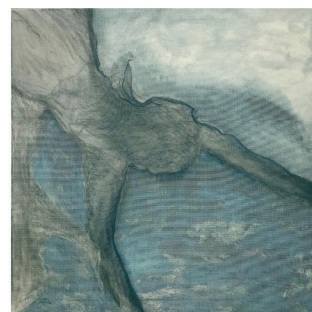
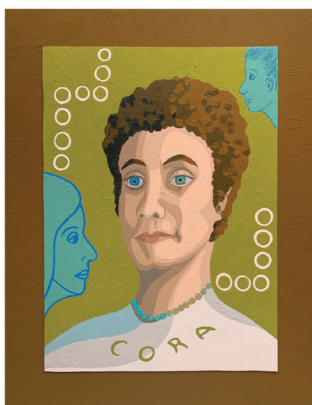


# AMSTERDAM WHITNEY GALLERY



**November 8 -  
December 6, 2019**



*“Moulin Rouge-Thanksgiving” Soiree*  
Saturday November 16th, 3:00-5:00 p.m.



# HEROLD ALEXIS

## “Cornucopic Dioramas”



*“Love Hate Relationship”*  
Oil on Canvas  
36”x 48”

Artistically inspired by Monet’s statement “I express the living essence of a human being, depicting the character, emotions, intentions, and mood through a portrait; I aim to represent the spirit and the soul of a person.” New York artist and Police Officer, Detective Herold Alexis’s social narrative panoramas of human figures interacting on the streets of New York awaken our social consciousness. Seamlessly capturing reality in paint, this NYPD’s visual storytelling, painterly realism portraits, transport the viewer to the urban streets of the “City that Never Sleeps.” Authentic and unfiltered, these painted pictorial snapshots fill the spectator’s eye with frozen scenarios of the immediate, private activities of crime in the metropolis, such as homicides, shootings, violent assaults, missing persons large demonstrations and protest and domestic violence.

Aesthetically unabridged, Herold Alexis offers a visceral allegorical view of life through intriguing figural scenarios, capturing his subjects amidst daily activities. Through his powerful storytelling, Mr. Alexis raises introspective questions about today’s society as he highlights disconnected and often violent socialization. With unique frankness and stylistic bravura, he virtuosically challenges the viewer to respond to painted scenes which depict violent crime, street arrests, car chases and domestic crimes and intense emotional experiences, as he creates an artistic metaphor of social commentary. A visual subway ride to crime, his visceral canvases become psychological insights to the individuals who perpetrate and are ultimately disrupted and alienated by unpredictable, violent events.

Widely recognized for his visceral observations of the grit and the grid of the mean streets of New York, Social Narrative artist Herold Alexis is dedicated to commemorating and understanding the violence and social interaction of crime. Herold Alexis states: “My goal as an artist is not to change the way people look and think about the police but to simply tell our story. I’ve only begun to scratch the surface because a lot of my issues about my experience as a police officer are extremely sensitive. I struggle with how open and transparent to be and whether it is actually necessary to paint about a particular topic or

event. The stories I have depicted in my paintings are not about shoot outs and car chases. The paintings are about the struggle of being a Black police officer working in primarily minority communities while being labeled a sellout or a traitor. My paintings are also about victims of domestic violence which goes largely ignored and reflecting on situations in my past that will stay with me forever. My paintings are also self-therapeutic. I’m laying all this bare and I want to exhibit this for the world to see.”

Similar to a scene from a Martin Scorsese movie or an episode of TV’s “Law and Order,” NYPD Herold Alexis’s dioramas are overflowing with emotion and color. As a result, these paintings become powerful tributes to the police officers who are giving their lives to maintain peace, law and order. Promoted to Detective, Herold Alexis explains: “When I first began my career with the NYPD, I never imagined how complex and complicated being a Black police officer working in primarily minority communities would be. The experience has been made increasingly complicated as a result of the recent killing of Black people during confrontations with the police. I also would never have imagined that sensitive issue of police-community relations and my personal experience with that topic would inspire me to begin painting again. With that inspiration I want to share with the world some of my stories and experiences.”

Profound, studious and spontaneous, Herold Alexis figurative social narrative paintings visually render an expressive dialogue about the denizens of New York City. Boldly depicting the issues of crime and violence, Herold Alexis’s figural, kaleidoscopic panoramic scenes capture the dynamic reality of Manhattan’s dangerous street life. With audacious visual intensity, his bold, figurative urban panoramas, brilliantly illustrate twenty-first century vignettes in all their fleeting, yet lasting impact. Celebrated in the Northeast, NYPD Detective Herold Alexis has enjoyed numerous successful exhibitions in the Tri-State area, and the presence of his works in prestigious collections is an affirmation of his continually expanding reputation. Amsterdam Whitney Gallery is proud to showcase the art of this important Contemporary Master.



# WENDY COHEN

## *“Optyx of the Evanescent”*

Inspired by Hans Hoffman’s philosophy, “Creation is dominated by three absolutely different factors: first, nature, which works upon us by its laws; second, the artist who creates a spiritual contact with nature and his materials; third, the medium of expression through which the artist translates his inner world,” Australian artist Wendy Cohen creates innovative virtuosic, large-scaled, mixed media canvases which spiritually communicate the harmony and beauty of the world. Incorporating her fascination with abstraction, whether it be an entire non-objective canvas, juxtaposed with collage elements, Ms. Cohen metamorphoses her unique vision of revealing the invisible with the visible as she explores an inner aesthetic terrain resonating with a visual invocation.

Wendy Cohen’s dazzling abstract Expressionist paintings project an alternate sense of reality, one which is not based solely on what is visible but rather another reality. Overlapping vibrant colors contribute to an organic, sensorial sensation of the natural world as her color wheel alternates between vivid bright and sensual jewel tones and large swaths of space. Painting a kaleidoscopic dreamscape, color is the signature hallmark of Ms. Cohen’s oeuvre with colors that float effervescently on the canvas, creating an atmospheric haze. The nuances of color caused by the deliberate swaths of paint, entice the viewer to engage in the joy of her oeuvre as the pageantry of the visual field of hues shapes and patches of light create a freedom of expression.

Inspired by Abstract expressionism, this gifted artist creates a startling synesthetic phenomenon as her unbridled emotion reveals a singular language resulting in a cornucopia of color, which contributes to a tactile quality. Revealing inner and outer horizons

of color, her imprimatur of a saturated spectrum of hues and constellation of tones, results in canvases of decadent aesthetic beauty and mesmerizing opulence. As she interprets color through the sounds of her soul, Ms. Cohen captures the search for the beauty of creation and the harmony of the cosmos.

Working with a layered complexity of influences; moods, past experiences and observances of life, Wendy Cohen builds a visual syntax of lyrical expressionistic abstraction. As she navigates space through her spectral, saturated colors and collaged elements, this gifted artist’s huetopian compositions focus on color, shape, line and form. By communicating a painterly abstract language, she incorporates collage elements such as hessian, cardboard, photographs paper and re-cycled material and transforms them into the textured materiality. The primary focus is to translate the static space into syncopated contrasting colors, highlighting the chemistry and resonance.

Externalizing the interior of our souls, Wendy Cohen fuses inner visions and translates them into dazzling outer realities which become an expressive interpretation of life itself. Brilliantly translating onto canvas with a syncopated beat the magnificence of our world and subconscious, Wendy Cohen has participated in a lifetime of immersion in the arts, culminating in an outstanding body of work. Cultivating a strong reputation in the international art world, her artwork is treasured in prestigious public and private collections throughout Europe, Australia, Africa, and the United States. Amsterdam Whitney Gallery is delighted to shine the spotlight on this important international star!



*“Zebra Lines”*  
Oil on Canvas  
24” x 32”





*"Field of Dreams"*  
Oil over Canvas with Fingertips  
24" × 36"

# ADRIANA CORREA

## *"Fulcrum of Luminosity"*

Marina Abramovic mused: "The world doesn't need an artist who shows reality as it is." Inspired by this philosophy Adriana Correa's oeuvre conveys her expressive response to the environment in her masterful landscape paintings. Through her adroit painterly skills, the environment is given a visceral reinterpretation, a new dress for her to wear. Color and light intermingle to create a fantasy that reflects the reality and unreality of it all, something that is idealized and yet still rings true to the actual world. Adriana Correa states: "As an artist, I love to paint the beauty of life in colors and textures that makes us feel that we are part of the painting." Explaining further, she states: "Watching nature, animals in their natural environment, the beauty of the flowers, the movement of the water, the wind playing with the leaves in the fall or the warmth of an orange sunset in the summer, the cool blues of winter, all invite me to fill my fingers with oils and make them whimsically dance over the canvas."

Intuitively reflecting on the expressive color and design of nature, Adriana Correa transcends the limitations of the everyday with expressionist oil paintings which juxtapose serene natural settings with the dynamism of tactility and color. Exemplifying a complete understanding of her inspiration of the world, Ms. Correa's rich tapestry of colors, shapes and textures visually map out her pictorial responses to the universe. A visual counterpoint to her landscape oeuvre, her painterly techniques capture the atmosphere and aesthetics of the lush terrain. Drawing from the artistic language of the Impressionists and Expressionists, the artist paints the ways in which light affects form. The resulting compositions capture a transient moment in nature as she conjures feelings and experiences of being at one with the natural terrain

Encapsulating her unique responses to the pictorial universe and the vast expanses of the rhythm of nature, Adriana Correa skillfully brings the vibrancy of her landscapes to life with dynamic fingertip, thickly painted application. Painted with panache and an acute passion for color, she uses her fingertips rather than a paintbrush and employs generous spectral strokes, which are boldly expressive, resulting in an exuberant and tactile surface. The imprimatur tones of her colors burst forth from the canvas with an explosive and effervescent charm and this fluid choreography of painterly gestures and hues becomes the catalyst which empowers her canvases to become excitingly alive. Through contrasting colors, she imparts the essence of amorphous nature as she renders singular, meaningful moments that define her individual impression of the world.

Imbued with a luminous sense of transcendence, the world is re-envisioned with fresh eyes, as Adriana Correa's virtuosic masterpieces embody the eternal and visceral. Saturated with color, light, form and texture, she offers a rich sensory tableau that illuminates the emotional intensities of nature. With a spectacular electric vigor, this passionate dialogue begins with a fluid, tactile visceral experience and ends with a syncopated commemoration of the natural world. Award-winning painter Adriana Correa has participated in a lifetime of immersion in the arts, culminating in a wonderful body of work and has embarked on a painting career which has catapulted her into a meaningful position in the contemporary art arena. The New Hampshire based artist has enjoyed numerous successful exhibitions throughout the U.S., and the presence of her works in prestigious collections across the world, is affirmation of her continually expanding reputation.



# CORA CRONEMEYER

## ***“Optyx of the Evanescent”***



*“Annie Sullivan”*  
Acrylic on Paper  
22.5” x 17.5”

Offering a visual response to Lucien Freud’s statement: “It is through observation and perception of atmosphere that the artist can register the feeling that he wishes his painting to give out,” Cora Cronemeyer’s innovative, polychromatic compositions are in synch with Freud’s perception. Employing the language of painting to visualize her concern over the environment, ecological changes and politics, her compositions boast a synergy of exhilarated emotion and pathos. Fusing the duality of human beings with the events of the universe, her cognitive, colorful paintings are an alchemy of the human spirit, reverberating with a socio-cultural visual interpretation. As she bridges the gap between figurative and abstract, natural reality and natural illusion, an infinite spectrum of animated perception and interaction result in visceral artistic visions which transform into a tangible, visual vortex.

Communicating her inner self through her colorific paintings, Ms. Cronemeyer creates powerful, thought-provoking works which are inspired by her empathetic reactions to humankind and their relation to circumstances. Influenced by the events of life and the people who shape them, she arduously renders visual form to her responses, translating inner realities, manifesting them to external observations of the natural world. Employing an iconography of words, images, and symbols, she metaphorically explores how we process these concepts into the ideas that shape our lives. At first sight, certain images appear light-hearted, but upon deeper reflection, have serious meanings. Writing is a key element of her oeuvre with hand-painted words which are juxtaposed in her canvases. Rendered in a loose hand, these texts are inspired by various sources ranging from political events, ecological concerns, societal issues as well as the deep voices of inward consciousness, and most importantly, her socio-political observations of the world.

Aesthetically and conceptually, Cora Cronemeyer’s personal style has been shaped by a range of 1970’s art movements, including New Image painting, Conceptual Art, and Pop Art. Like New Image painting, her imagery is direct, basic and fundamental with favorite images which represent common concepts which are rendered in a seemingly casual style. Deeply connected to vibrant color, her acrylic canvases are swathed with electrifying pops of color, revealing a rich labyrinth of multi-layered hues. Undeniably, it is the arresting color palette in these works which immediately impresses upon first sight. Powerfully integrating an intensity of flushed hues into each kaleidoscopic canvas, swirling, expressionistic brushstrokes and a luscious jewel-tone color palette complement the intriguing scenes. Extraordinary tones burst forth as she enervates every color in the spectrum, energizing our interaction with the universe.

Providing a window into a diverse cultural and emotional landscape, Cora Cronemeyer’s dazzling panoramas incandescently illuminate sublime emotional vistas with passion, depth of emotion and sensitivity. Vibrating with warmth and light, the overall effect is one of visceral expressionist introspection and aesthetic intrigue. In a world of constant change and flux, Cora Cronemeyer’s compositions reflect hope, renewal and regeneration. Intuitive and spontaneous, Cora Cronemeyer displays complete understanding of the artistic language of emotion, thought and concept. A passionate and lifelong proponent of the arts; Cora Cronemeyer’s paintings embody the essence of the resplendence of the world. This gifted artist has enjoyed numerous successful exhibitions in New York, and the presence of her works in prestigious collections is an affirmation of her continually expanding reputation. Amsterdam Whitney Gallery is proud to showcase the art of this shining art star.



# KATHARINE GOULD

**“Exodus”**

**“Optyx of the *Evanescent*”**

Aesthetically guided by Helen Frankenthaler’s credo: “Every canvas is a journey of its own,” Katharine Gould’s “Exodus” series creates figurative landscape paintings which illustrate socio-cultural narratives of transplanted fugitives fleeing their land, in search of safety. Reflecting on her work, Ms. Gould comments, “I have always been drawn to and affected by flight, in all its forms: Flight from fear to safety, from isolation to intimacy, from anger to love and from horror to the unknown.”

Transporting the viewers on a visual odyssey, Ms. Gould’s artistic compass is a beacon of light, not only recording the world around us, but also recreating the emotions she feels. Set against a lonely landscape, the diaspora of these wandering figures haunt the viewer with their silent power as they search for a better life and a sense of belonging. Viewing her caravan of color and form, crossing land and sea, her “Exodus” series presents the elements that lead us to embrace the migration to freedom and reflect on what it means to be human. Unafraid to face the most painful aspects of the human condition, Katharine Gould’s pastel paintings reflect a journey, both physical and emotional, which reveal the experience of flight, abandonment, grief and loss. Her nomadic, faceless figures symbolize alienation and exile.

Timely and timeless, the exile of the global refugee today represents a history shared by many, bridging an understanding that we search for, a sense of belonging in our ancestral roots. Summarized by the Uruguayan journalist, Eduardo Galeano who declared, “No history is mute. No matter how much they own it, break it, and lie about it, human history refuses to shut its mouth. Despite deafness and ignorance, the time that was, continues to tick inside the time that is.” Ms. Gould accentuates, “In my “Exodus” series,

I want the viewer to experience the plight of the refugee: Syrian, Afghan, African, Rohingya, South American...the millions living as nomads today. Civil wars, terrorism, poverty, famine are driving them from their homes. Yet the will to survive is strong. I see them hurrying across the horizon, carrying only what their backs can bear, their history in a bundle. They seem to be in the middle of not reaching anywhere.” Demonstrating that color is not only about externally seeing but also about an internal visceral feeling, Ms. Gould explores color as a sensation, as she visualizes inner worlds and morphs them into outer realities. Her masterful use of pastels is imbued with a unique expressiveness well suited to her subjects.

Mirroring her art, the California based Katharine Gould has also participated on a life journey. Born and raised on the East Coast in Cambridge Massachusetts, she recalls, “As a young child, color was like food for me, bolts of fabric, fields of flowers, the ocean’s moods, nurtured me more than my lunch box. While friends had lemonade stands I sold my hand painted clam shells.” She graduated from the Art Institute of Chicago and received her Masters of Fine Art from the University of Chicago. She is a recipient of an artist studio at the prestigious Cité International Des Arts in Paris, where she worked and exhibited for three years. After France, she returned to Chicago and became a child psychoanalyst, graduating from the Chicago Institute of Psychoanalysis. For the last decade, she has resettled on the West Coast, in Los Angeles, where she paints in pastel media and has created her most recent works. Celebrated in numerous successful exhibitions and private collections throughout the United States, Ms. Gould’s lifetime immersion in the arts is an affirmation of her continually expanding reputation.



“Ballad of the Refugee”  
Pastel on Textured Paper  
53” x 37”



# PAUL KENTZ

## “Cornucopic Dioramas”



“Holiday Tourists”  
Oil on Canvas  
16”x 20”

Realistically inspired by the American Realist painter, Robert Henri who advised: “Your painting is the marking of your progression into nature, a sensation of something you see way beyond the two pretty colors over there. Don’t stop to paint the material, but push on to give the spirit.” Following this credo, New York City visual story teller and acclaimed artist, Paul Kentz, is widely acknowledged for his search for truth in his vibrant and spirited pictorial dioramas of New York City. Depicting the “Theater of the Streets,” Paul Kentz is inspired by the early 20th century artistic movement known as The Ashcan School of Art, whose members realistically portrayed scenes of daily life in The Big Apple. His bold, vibrant interpretations on the realist genre, are infused with the spirit of New York as he shines the spotlight on Central Park, Rockefeller Center, stores on Madison Avenue, Lincoln Center, Parades and bustling traffic on Broadway

Effortlessly transporting the excitement and joie de vivre of the percolating, cosmopolitan streets of the Big Apple onto canvas, Mr. Kentz fills the spectator’s eye with expressive snapshots of the global metropolis’s bustling activities. Hauntingly beautiful, a pictorial snapshot of life in New York is frozen in time, as he conveys the intangible spirit of everyday activities and interactions of real people in New York City. Walking the streets, taking the subway, viewing the crowds, Mr. Kentz documents these dioramas with his camera and then, paints his personal impressions from these photographs. Translating his visual commitment and love of New York, Paul Kentz’s paint brush is inspired by its historic cultural sites, and his most recent landscape collection showcases the power, dynamism and thrilling energy of The Big Apple as he explores the iconography of the contemporary figure in timeless landscape. The tight focus of his angles invokes the sharp, crisp edges of the camera lens while his palette keeps the viewer in the know of the moment, the reality of these places is such that they transcend the page and become tangible realities.

His visual Lullaby to Broadway is further enhanced through his opulent color palette featuring granny apple green, sun-kissed red and electric blue. Like the city itself, these paintings sizzle with New York’s synergy as a rich bubbling cauldron of electrifying color explodes, inspiring the viewer to remember the sounds of Fifth Avenue in the fall or the aroma of hot roasting chestnuts from the cart. In a virtuoso display of color technique, Mr. Kentz constructs his work like perfectly balanced stories; these visual snap shots take our scenarios and blend them into ongoing narratives of our city. Characterized by brightly vibrant primary tones, the paintings of Paul Kentz are strikingly joyful and are interspersed with modern sensibilities, calling to mind Gershwin’s Rhapsody in Blue, with his dynamic understanding of the pulse and the sights and sounds of the city.

Ultimately, Paul Kentz’s dynamic panoramas are a visual record of New York City and thus elevate his painterly vision to that of iconic status. Award-winning artist Paul Kentz works and resides in New York City. Paul Kentz holds the distinct honor of having his book “Views and Vignettes- Glimpses of New York” accepted into the Metropolitan Museum’s prestigious Nolan Library Collection, located in the Ruth & Harold D. Vries Center for Education. In addition, his Bastille-themed painting featuring French Can-Can Dancers is in the collection of the French Institute- Alliance Francaise, located in New York City. Mr. Kentz has exhibited his art nationally, as well as throughout New York, and is a recipient of numerous awards and honors such as the 2007 “Merit Award” at the Roberson Museum and Science Center. His opulent work hangs in many public and private collections internationally, and Amsterdam Whitney Gallery is proud to showcase the art of this contemporary New York master.





"Summer Flowers"  
Mixed Media on Canvas  
40" x 30"

# ESTI KISS-DAVIS

## *"Fulcrum of Luminosity"*

Aesthetically guided by the philosophy of Claude Monet who stated "I perhaps owe having become a painter to flowers," New York artist Esti Kiss-Davis's expressionistic floral paintings honor the elegance of the terrestrial world, conjuring the beauty of the flora kingdom through chromatic blossoms and effusions of luminous light. Reverberating with intense colors and rich textures, Ms. Kiss-Davis synthesizes the perfect aesthetic environment where floral subjects are combined with dazzling intensity and movement. Notably infusing texture and distinctive brushwork to distinguish the personality and visual character of each flower, she re-creates stolen moments and introduces us to her sensorial floral realm. With a strong emphasis on decorative elements, her organic paintings commemorate the universally sublime, which encapsulates her own individualistic lexicon of illuminated hues and masterful brush strokes.

Intimately translating the glory and jubilation of each flower, Esti Kiss-Davis's brilliant technique translates ephemeral moments of bloom, capturing prismatic portals of nature with bright hues of incandescent light, heavy impasto brushstrokes and explosive bursts of passionate color. With color as the primary imprimatur and impetus in her paintings, she masterfully captivates viewers by establishing a cauldron of striking color relationships within each heavily saturated flower petal, juxtaposing exciting tonal pools of heavily variegated hues. Harmoniously employing the full spectrum of the color wheel, Ms. Kiss-Davis's tonal palette allows her paintings to dynamically reveal a visceral portrayal of the floral realm. Often shown with

dramatic lighting, each flower emerges to become dynamic, expressive, and electrifyingly lifelike.

Encapsulating the transitory moments of the organic world by portraying flowers in bloom, Esti Kiss-Davis embraces the unique personality and identity of each flower. Striving to introduce a different way of looking at nature, her expressive compositions visually narrate the wonders of nature, reflecting the slower rhythms of life and the moments frozen in time. Focusing intently on the distinguished details of each flower, she often chooses a pivotal point of action, such as a bursting flower bud, or the moment a ray of light bursts through a petal. Transcribing her intricately detailed floral portraits, Esti Kiss-Davis's master works seek to appreciate the ethereal nuances of our environment. In the moments immortalized on her canvases, she freezes the lush beauty of nature with an unapologetic indulgence for the visual senses.

Spiritually infused with a visceral narrative of life's abundant blossoming transformations, Esti Kiss-Davis's floral paintings become ethereal visual metaphors for the wonders of nature. Sophisticated in execution and stunning in effect, the incandescent floral oeuvre of Esti Kiss-Davis results in transluminescent masterpieces that celebrate the divine beauty of nature. Encouraging the viewer to rejoice in the resplendence of nature, she visually reminds us that there is celestial beauty in every moment and in every corner of this wondrous world. Cultivating a strong reputation in the international art world, Esti Kiss-Davis's artwork is treasured in prestigious public and private collections throughout the northeast.





"Wave Me In"  
Acrylic & Ink on Canvas  
24" x 20"

# LORI MOLE

## "Synergies of the Plentitude"

Geographically linked and artistically influenced by Jackson Pollock, a fellow Californian, who stated: "Abstract art should be enjoyed just as music is enjoyed," Lori Mole's harmonic compositions pay tribute to this Jackson Pollock credo and the universal language of music and art. Weaving pictorial narratives which celebrate rhythm and color, along with a sweeping spiritual energy, Lori Mole explains: "Like Jackson Pollock trying to capture energy, I try to capture moments where music can take us." By amalgamating two distinct artistic genres: art and music, Ms. Mole's vibrant imagination, coupled with her masterful technique, creates exciting musically-themed compositions.

Drawing inspiration from Jackson Pollock's drizzle themed paintings, Lori Mole's "Music Series," incorporates black watery "bars" of music with drizzle acrylic paint overlaid. Deconstructing reality, she conveys the rhythm and beat of the musical realm with lyrical abstract reveries, which reverberate with symphonic precision. Externalizing the internal music in her soul, her vibrant tones provide a balanced sense of composition as her artistic vision comes to a crescendo through the mystic realm of color. Right on key, this gifted artist hits a high note with her dazzling palette, resonating with the pulsation of color that unites her oeuvre. Often adding graphic notes or lettering to create bold, dramatic designs, Ms Mole states: "I like to think that I'm creating on a positive note."

Transposing her soul onto her canvases, Lori Mole's acrylic art radiates her joy for both music and the visual arts. Incorporating musical notes, instruments,

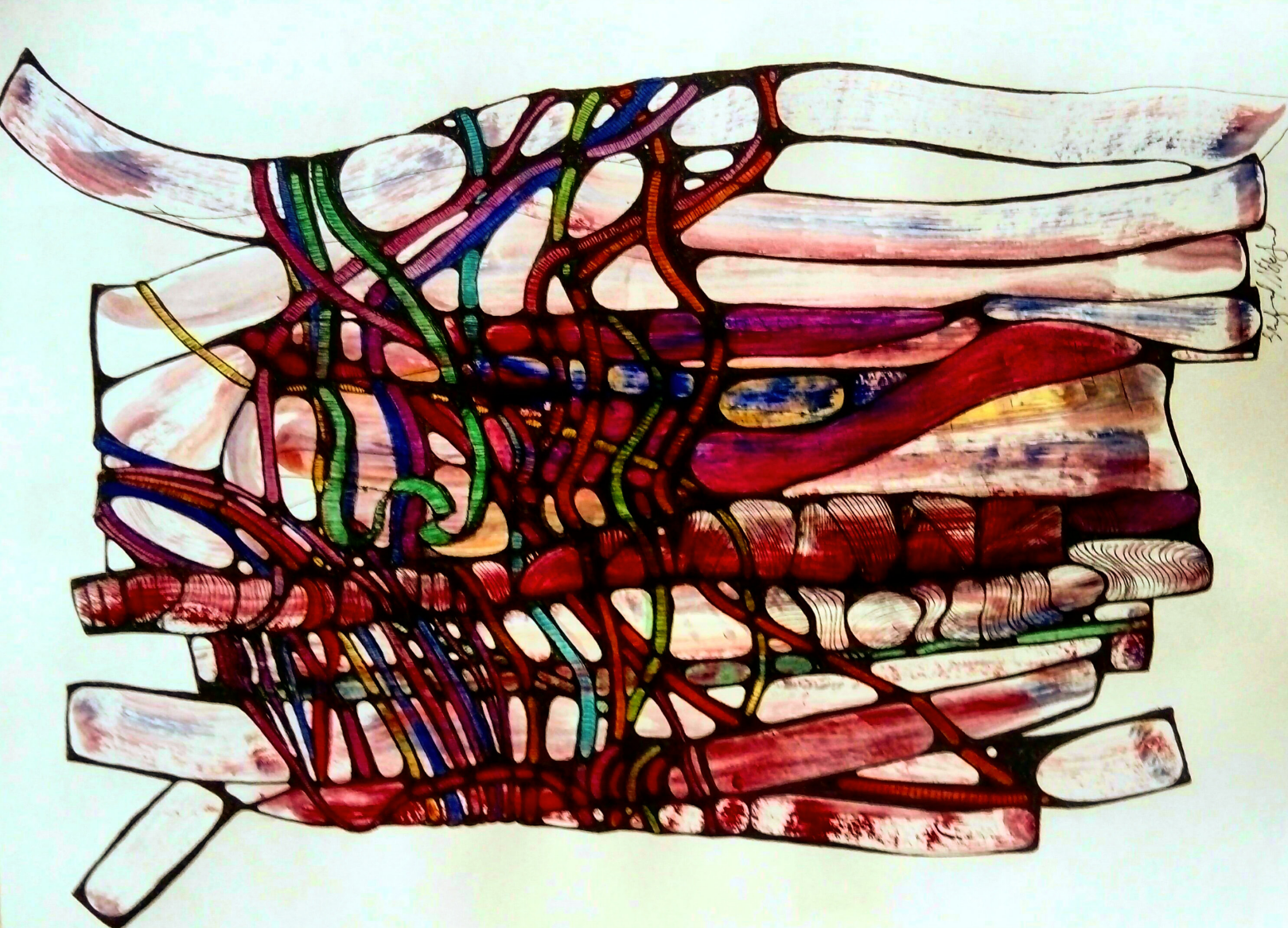
and venues into her works, Ms. Mole effortlessly imbues each painting with a creative power. "I want people to see the music," she explains. "My work is based on instruments, not figurative musicians. I feel this creates more of a timeless, visual message." Depicting gallery scenes and music venues, Lori Mole invests each composition with incredible vitality and an irrepressibly hued syncopation. Ms. Mole's expressionist compositions pulsate with gestural swaths of bold colors and brilliant plays of light. Tension and energy dominate her explosive canvases as her masterful color application electrifies the scene she portrays. Evocative, emotional and imbued with great visual energy, her modern vision orchestrates gem-colored forms that vibrantly ascend the compositions, inspiring viewers through rhythmic brushstrokes, melodic color schemes and compositional harmony.

It is easy to hear music in Lori Mole's canvases, as her radiant palette and musical forms work in concert to embolden the subject matter. With a hidden heart in each painting, this former gallery owner and award-winning artist, translates onto canvas the sound and joy of music. Participating in a lifetime of immersion in the arts, culminating in a wonderful body of work, her career has catapulted her into a meaningful position in the contemporary art arena. Ms Mole has exhibited extensively throughout the United States and the presence of her works in prestigious collections across the world affirms her continually expanding celebrated reputation.



# SHAHRZAD NIKZAD

## “Synergies of the Plentitude”



“Abandoned”  
Promaker and Pigment Liner on Paper  
16” x 24”

Influenced by the observation of Paul Gauguin: “Don’t copy nature too closely, Art is an abstraction; as you dream amid nature, extrapolate art from it and concentrate on what you will create as a result,” Shahrzad Nikzad’s “Hanging on the Tree’s Breath” Series reflects this credo. Challenging the viewer to move beyond an initial perception of nature while expanding her own personal abstract impressions, Ms. Nikzad synthesizes her unique artistic vision of the natural world. Visualizing terrestrial worlds and morphing them into outer realities, this Middle-Eastern born, Swedish based artist seeks to create a new abstract visual language on nature.

Translating her passion of nature into dynamic acrylic canvases which exude heartfelt beauty, her cauldron of colors and forms breathe life into each composition. By introducing us to intangible emotions, her technical skill ensures that each painting is aesthetically sophisticated. The mystic realm of color theory is encapsulated by revealing saturated hues, delicate tints and variegated shades, through numerous application methods which build onto the canvas. Echoes of emotional expression integrate a syncopated spectrum of the color wheel with topographical layers of richly saturated brushwork. Articulating perceptual fragmented layers of color into abstracted impressions of our world, Shahrzad Nikzad’s quest for color reflects a natural arrangement of hues in the human visual syntax.

With élan and brio, Shahrzad Nikzad sensorial natural realm metamorphs into a spiritual dialogue which visually mimics the organic energy of nature. Demonstrating a diversity of emotional experiences in each of her kaleidoscopic works, she creates her own reality that is unconstrained by rules or conventions.

Reflecting an illuminated cauldron of hues, her colorants interact with shape and form to establish an energetic dialogue about perception and the transitory moments of our surroundings. This visionary artist’s canvases conjure huetopian spectrums from the heart and her poignant masterful Expressionistic paintings intriguingly explode in an exciting spectral realm, which follows an inner quest for personal artistic expression.

By reorienting the viewer’s vision, Shahrzad Nikzad skillfully encapsulates auras and energies that are hidden from our visual perspective. Her imaginative interpretations of colors and landscapes are an investigation into representations of what nature means to humans. Painting the ever evolving relationship of humans and nature, her visual language of shape, color, and dynamic motion contribute to a reverberation transcendent of the canvas. Revealing an elemental and transcendent dance between atmosphere and light, her painterly intermix is to create compositions expressive of artistic freedom. The fluidity of this organic sphere is comprised of precise, deft brushstrokes, all coalescing to harmoniously create a constellation of fluid form with infinite regeneration.

Capturing the metaphorical shapes and forces of our natural world, the cosmopolitan Shahrzad Nikzad visceral personal vision and intangible emotions serve as an indexical symbol of the heart’s core. Sophisticated in execution and stunning in effect, her globally acclaimed artwork has catapulted her from the Middle East, to Europe and now to New York. Acclaimed internationally, Shahrzad Nikzad’s art is treasured in prestigious private and corporate collections. Amsterdam Whitney Gallery is proud to shine the spotlight on this cosmopolitan natural star.



# SHARON SAMPSON

## *“Synergies of the Plentitude”*

Artistically inspired by Albrecht Durer who declared: “From this [drawing], the treasure secretly gathered in your heart will become evident through your creative work,” Sharon Sampson’s mixed media monotypes are influenced by this creative ideology. Linking her print making through expressive uses of color and line-work along with unique concepts and references to the female figure, her surprising, clever, yet beautiful compositions connect with a universal, humanistic, and natural syntax. Designing her own prints using a hydraulic printing press, Sharon Sampson states: “My favorite printmaking techniques include monotypes, collagraphs, linocuts and etchings. I enjoy the unpredictability of monotypes and aim to create a sea of vibrant inks which flow into one another and settle before printing. The end result is often incredulity when sometimes the final outcome has unexpected surprises.”

Demonstrating the voluminous effectiveness of lines upon lines in her mixed media monotypes, the South African-based artist Sharon Sampson’s oeuvre is a catalyst in effusively rendering female figurative. With a quality of spirituality, her rich and exuberant female-centric prints embody the complexities of portraying womanhood, encompassing the multifaceted experiences of women. Delicate semi-abstracted female silhouettes are poised at the intersection of form and abstractions, revealing a hybrid blend of organic shapes and curved figuration. With subdued, muted colors, Ms. Sampson offers an irresistible counterpoint into a deeper conversation about the complexities of women, as she portrays their polarity as sexual and distant, emotional and introspective, colorful and muted. Looking for nuance and totality, she carefully cuts the image into her matrix style, creating wonderfully sophisticated and delicate works.

Imbued with high-velocity energy, each monotype composition has an intrinsic sense of motion which allows each work to transcend its two-dimensional state, powerfully conveying an innate life force, a sense of brilliant emotion and adventure morph into fascinating unpredictability. Externalizing the magnificence of women, her monotypes are not a direct reflection of reality but rather are an emotive expression of captured time and inner spiritual space. This mimetic quality truly establishes Sharon Sampson’s mastery over the medium. The potential energy contained in each line and curve explores woman’s connectivity to nature. A distinct transmutation evolves within each work, turning the ephemeral into the eternal. Stunningly sophisticated and detailed, Sharon Sampson’s monotype compositions capture the innate complexities of womanhood, translating them into the visual realm. Elegant and lovingly crafted, each Sharon Sampson monotype speaks to the human and natural conditions of life in gesture and in form, allowing the viewers to visually participate with each different composition.

Heralded as one of the more important monotype artists in South Africa, Sharon Sampson’s truly unique talent can be observed in her oeuvre. Co-founder of the biennial FAP - the South African Fine Art Print Fair. FAP, was the first national exhibition of its kind, dedicated solely to print, Sharon Sampson commands a reputation of excellence through her printmaking studio in Illovo, Johannesburg, from which numerous noteworthy South African artists have emerged and grown. Celebrated in both South Africa and Europe, Ms. Sampson’s monotypes grace international galleries and global collections. Amsterdam Whitney is delighted to shine the spotlight on this rising art star.



*“Foliage”*  
Mixed Media Monotype  
31.5” x 22”



# LULU ZHENG

## ***“Cornucopic Dioramas”***

Damien Hirst observed: “Art comes from everywhere. It’s your response to your surroundings.” Buoyed by this theory is Michigan based artist, medical doctor and swimmer, Lulu Zheng, pays homage to underwater activities. Diving into her unique artistic vision, she holds her breath as she inhales the joy of the external world, and exhales its beauty. Inspired by her love of swimming and reverence for the environment, her mixed media and sculptural compositions revel in the wonderment of the world. Whether swimming in a pool or capturing the magnificence of the quiet treasures of life, Lulu Zheng’s aquatic oeuvre encapsulates her response to the marvels of the environment. Reimagining the external universe, her figurative mixed media, metal, mesh and charcoal acrylic paintings engender a unique visual syntax which integrates a link with the external natural terrain and the invisible inner spirit.

Adroitly emphasizing that we are more than united, Lulu Zheng’s unique artistic vision is a symbiosis between nature and humans, resulting in imagery that is at once an artifact of nature and a product of the artist’s talented brush strokes. Integrating harmony, movement and the dynamic rhythm of forms, Dr. Zheng creatively embraces the relationships between nature, the body, and the metaphysical world as she focuses on the female swimming form, swimming in water. Her contemporary visions are evocative of the natural landscape as well as the human form, as she reinterprets her personal experiences which transcend time, boundaries, and borders. Suspended in time, her organic aquatic realm reminds us that the water cycle and the life cycle are almost one. Silhouetted by natural light and reflected in soft detail, her sensitivity to the natural elements and light permeates each work conveying a strong sense of freedom, as the swimming forms

flow into nature, symbolizing the interconnection of humankind with the natural elements.

A keen eye for the female swimming silhouette as observed from an unexpected angle creates a completely original composition. Imbued with a magical surreal and illusory quality, Ms. Zheng elevates the timeless act of swimming and celebrates the art of figurative painting by creating masterful tableaus which unite the beauty of the human form with the poetry of artistry. Capturing the true essence of swimming, Ms. Zheng masterfully transposes the synergistic movement of the body interacting with the flow of water. Dr. Zheng explains: “These works materialize our inner spirit in the organic formation of physical matter. My work encourages viewers to contemplate their own memories in relation to nature, matter and spirit.” Channeling her background in swimming and her affinity with water into her works, Lulu Zheng’s swimming terrain paintings communicate the sensation of being immersed in water’s simultaneous buoyant and resistance nature.

Alluring and magical, Lulu Zheng’s painting and sculptural oeuvre communicates the profound power of the natural world as she reveals an inner mystical aesthetic that exists beyond our view. In addition to holding a degree in medicine, the award-winning artist also attained a Master’s of Fine Arts degree from the prestigious Cranbrook Academy of Art. While achieving a successful name for herself in the international art world, she has exhibited her artwork in group and solo exhibitions around the globe. Her innovative artwork is treasured in numerous public and private collections worldwide, and Amsterdam Whitney Gallery is proud to showcase the compositions of this natural star.

*“Right Track”*  
Metal Mesh, Acrylic & Charcoal on Canvas  
24” x 24”



# AMSTERDAM WHITNEY

## INTERNATIONAL FINE ART, INC.

531 West 25th Street- Ground Floor-Chelsea  
New York, NY 10001

Phone: 212-255-9050 Fax: 212-255-9020

www.amsterdamwhitneygallery.com

AmsterdamWhitney@Aol.com

November 8 - December 6, 2019 Exhibit

"Moulin Rouge-Thanksgiving" Soiree: Saturday, November 16, 2019 3:00-5:00 pm

**AMSTERDAM WHITNEY GALLERY**, 531 West 25th Street, Ground Floor-Chelsea, New York City, is proud to showcase in its **"Moulin Rouge-Thanksgiving" NOVEMBER 8-DECEMBER 6, 2019** exhibition internationally and nationally recognized Contemporary Master Artists whose works overflow with bountiful creativity, illuminating the abstract, figurative and natural realms. In the spirit of the Chelsea Thanksgiving Art Season, and highlighted at the glamorous **November 16th Thanksgiving "Moulin Rouge" Champagne Reception**, this dazzling group exhibition will offer a cornucopia of contemporary talent that reflects divergent realities and subliminal dreams. Evocative and dynamic, this Autumnal Thanksgiving exhibition exudes an alluring glow with stunning luminous creative energy which challenges the boundaries of artistic creativity. Riveting and provocative, the artwork in this Thanksgiving exhibit transport the viewer to wondrous interpretative realms and are a testament to the talent of **AMSTERDAM WHITNEY GALLERY's** artists.

**CORNUCOPIC DIORAMAS** manifests evanescent perspectives from creative artists whose artworks act as expressionistic mirrors to our world, reverberating with their dynamic compositions which reflect a visual syntax of figurative narratives, intermingled with huetopian color, and unique perspectives. Brilliantly metamorphosing into glowing visual conversations, they are imbued with a vibrant sense of visceral emotion which reverberates with inner vision. Their originality and individuality burst with a bounty of mesmerizing compositional strategies that coalesce into vibrant compositions which transcend artistic parameters. **HEROLD ALEXIS's** social narrative panoramas of the urban streets of New York, featuring human figures interacting with the police, awakens our social consciousness as the NY Police Detective viscerally captures the reality of crime and violence in a realistic painterly style. Inspired by his love affair with New York City, **PAUL KENTZ**, is a visual story teller of the "Theater of the Streets," employing New York City as his artistic muse, shining the spotlight on The Big Apple's festive parades, lively festivals, and iconic NYC locals- always fascinated by the past, present and future of

NYC. **LULU ZHENG's** multi-media, female swimming silhouettes are inspired by her medical background along with her love of swimming, as she creatively embraces the relationships between nature, the body and the metaphysical world

**SYNERGIES of the PLENTITUDE** synthesizes the perfect spectral aesthetic which illuminates a spiritual connection to the world. These talented artists create entirely innovative vistas for visual exploration with innate sensitivity and sharp observational skills. Embracing the tangible and intangible joy of the universe, their vitality and masterful artistic skills remain paramount. **LORI MOLE's** harmonic, musically-inspired compositions draw inspiration from Jackson Pollock's drizzle themed paintings, weaving together music and art, as they celebrate musical rhythm and color along with sweeping spiritual energy. **SHAHRAZAD NIKZAD's** "Hanging on the Tree's Breath" abstract series challenges the viewer to visualize terrestrial worlds in an abstract fashion as she synthesizes her own unique vision of the natural world, emphasizing color, beauty and light.. **SHARON SAMPSON's** mixed media female figurative monotypes effusively render delicate semi-abstracted female silhouettes that are poised at the intersection of form and abstraction, revealing a hybrid blend of organic shapes and curved figuration

**OPTYX of the EVANESCENT** explores an inner aesthetic terrain resonating with an exterior visual invocation of the world. Rewarding the viewer with an inspired visual language of social, political and artistic concepts, this masterful exhibition reflects diverse artistic

perspectives and opulently overflows with provocative ideologies. **WENDY COHEN'S** dazzling abstract expressionist paintings weave narratives which are juxtaposed with collage elements and metamorph into unique visions, revealing the invisible with the visible. **CORA CRONEMEYER** communicates her inner self through her kaleidoscopic paintings, creating powerful, thought-provoking works which are inspired by her empathetic reactions to humankind and their relation to circumstances. **KATHARINE GOULD's** pastel paintings poignantly illustrate the refugees journey, both physically and emotionally, sensitively illustrating the Diaspora and exile of these alienated international citizens of the world, highlighting their flight, abandonment, grief and loss.

**FULCRUM of LUMINOSITY** communicates a prismatic dialogue on Mother Nature, offering a contemporary conversation on the wonders and beauty of our environment. With sweeping pictorial vision, these masterful artists capture the universal power of our earthly surroundings, elevating it to the sublime as their symbolic narratives express limitless emotions through high voltage, introspective compositions. **ADRIANA CORREA's** fingertip painted expressionistic landscape paintings intuitively reflect on the dazzling color and design of nature, juxtaposing serene natural settings with the dynamism of tactility and color. **ESTI KISS-DAVIS's** expressionistic impasto floral paintings honor the elegance of the terrestrial world, conjuring the beauty of the flora kingdom through chromatic blossoms effusions of luminous light. likeness, and explore the subjects' emotions, attitudes, intentions and mood as he masterfully evokes their soulful spirit on canvas.